

# BASO 2.5 WALL WASH

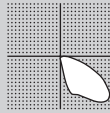


## Catalog Number Example

BASO 2.5-RTL-WH-WW-30K-C80-UNV-010V-SEN-0400LF-NLC-ST-24IN-CCEA

### PERFORMANCE

- Up to 125lm/W efficiency
- 400 / 600 / 800lm/ft
- CRI > 80 & CRI > 90
- IC rated & damp rated



### MOUNTING

Recessed



### PATTERNS



Rectangles

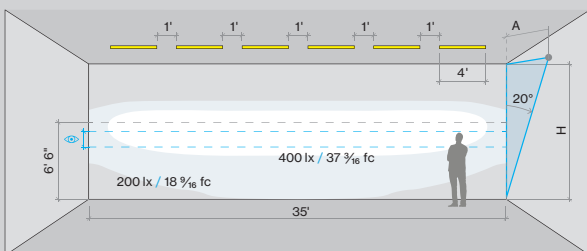
For customization, please contact customer service

### BEAM DISTRIBUTION



<b>Wall to ceiling ratio</b>	
Room height	H = 9 ft
Distance to wall	A = 3 ft
Reflection factor	0.7   0.5   0.2
Maintenance factor	0.8
Eye level	4 - 5 ft

[link to page](#)



### A RANGE

BASO 2.5      B A S O 2 . 5

### B MOUNTING

Recessed trimless	RTL
Recessed with trim	RTL
Armstrong Suprafine 9/16" G	AGG
Armstrong Interlude 9/16" SG	AGS
Armstrong Silhouette 9/16" BSG	AGS
Armstrong Prelude 15/16" G	A15
9/16" Grid (any brand)	9GR
9/16" Slot Grid (any brand)	9SG
15/16" Grid (any brand)	15G
Custom	XXX

### C COLOR

White	WH
Black	BL
Gray	GR
Custom color RAL	XX

trimless version available in white only

### D LENS

Asymmetric wall washer      WW

### E CCT

2700K	27K
3000K	30K
3500K	35K
4000K	40K
Custom CCT	XXK

### F CRI

CRI > 80      C80  
CRI > 90      C90

### G VOLTAGE

120V / 277V      UNV

### H DIMMING

0-10V 1%	010V
Lutron EcoSystem	LES1
Quantum, Vibe, GRAFIK Eye, HomeWorks	
Power over ethernet	POEC
consult customer service for compatibility	
Custom dimming	XXX
consult customer service for compatibility	

### I SENSOR (optional)

Integrated Sensor      SEN  
consult customer service for sensor request

### J OUTPUT LM/FT

500lm/ft 100% $\pm$	0500LF
750lm/ft 100% $\pm$	0750LF
1000lm/ft 100% $\pm$	1000LF
Custom lm/ft	XXXXLF

custom lumen up to 1200 lm/ft

### K CIRCUIT / EM

Single circuit	*
EMC night light circuit	NLC
EMB available in 4ft and 8ft	EM#

\*leave blank

### L SHAPE / PATTERN

Linear / straight	ST
L-shape inner	LI
L-shape outer	LO
□-shape inner	RI
□-shape outer	RO
U-shape inner	UI
U-shape outer	UO
Custom shape	XX

please contact customer service for availability

### M DIMENSIONS IN INCH

Linear 2'	24IN
Linear 4'	48IN
Linear 6'	72IN
Linear 8'	96IN
Linear custom	###IN
L-Shape	###X###IN
U-Shape	###X###X###IN
□-Shape	###X###IN

### N CERTIFICATION (optional)

Chicago Plenum      CCEA  
Red List Approved      RLA

**BASO**  
basolighting.com  
xalusa.com

### Technical data

	SIZE TYPE	LED COLOR TEMPERATURE	INPUT WATTS	DELIVERED LM TOTAL	LIGHT DISTRIBUTION	DELIVERED LM DIRECT	OPTICAL EFFICIENCY	LUMINAIRE EFFICACY
<b>BASO DIRECT</b>								
e LED	4' linear	40K	12.8W	1600lm	100% down	400lm/ft	75%	125lm/W
	8' linear		25.6W	3200lm				
e <sup>2</sup> LED	4' linear	40K	20.4W	2400lm	100% down	600lm/ft	75%	117lm/W
	8' linear		40.8W	4800lm				
e <sup>2+</sup> LED	4' linear	40K	28W	3200lm	100% down	800lm/ft	75%	114lm/W
	8' linear		56W	6400lm				

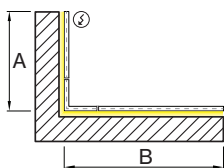
### Patterns top view

#### LINEAR



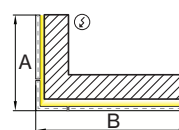
A	FIXTURES	CODE
48"	1 x 4' linear	0 4 F T
96"	1 x 8' linear	0 8 F T
144"	3 x 4' linear	1 2 F T

#### L-SHAPE OUTER



A / B	FIXTURES	CODE
48" / 48"	2 x 2' linear + 1 x 2' x 2' corner	0 4 X 0 4 F T
48" / 96"	1 x 2' linear + 1 x 6' linear + 1 x 2' x 2' corner	0 4 X 0 8 F T
96" / 96"	2 x 6' linear + 1 x 2' x 2' corner	0 8 X 0 8 F T

#### L-SHAPE INNER



A / B	FIXTURES	CODE
48" / 48"	2 x 2' linear + 1 x 2' x 2' corner	0 4 X 0 4 F T
48" / 96"	1 x 2' linear + 1 x 6' linear + 1 x 2' x 2' corner	0 4 X 0 8 F T
96" / 96"	2 x 6' linear + 1 x 2' x 2' corner	0 8 X 0 8 F T

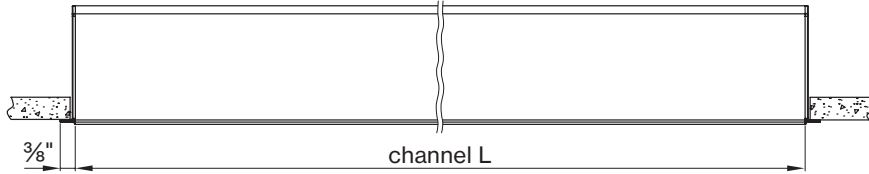
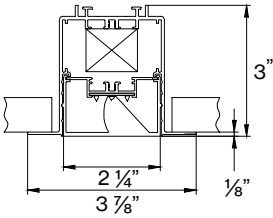
#### LIGHT DIRECTION DIAGRAM



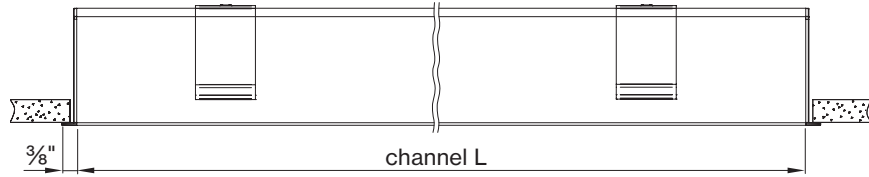
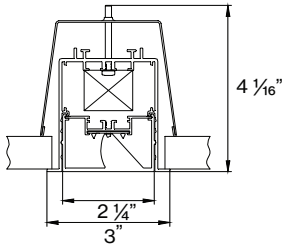
DIMENSIONS

**BASO 2.5 WALL WASHER**

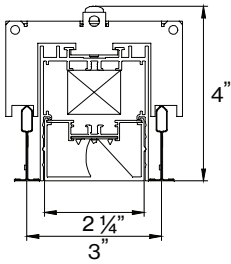
RECESSED trimless



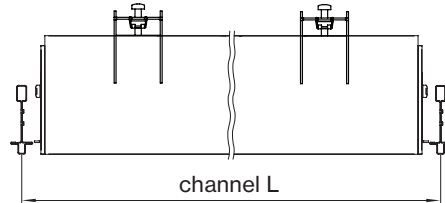
RECESSED with trim



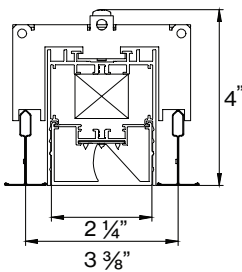
1/16" Grid (any brand)



1/16" Grid (any brand)



15/16" Grid (any brand)



15/16" Grid (any brand)

**Declare.**

**BASO 1.5 2.5 4.0**  
**XAL USA Incorporated**

Final Assembly: Collins, Connecticut, USA  
 LBC (Declare's brand)  
 End of Life Options: Recyclable (70%), Landfill (30%)

**Ingredients:**  
 Aluminum, 2-Propenoic acid, 2-methyl-, methyl ester, polymer with ethyl 2-cyanobenzoate, steel, manufacture, chemical, copper chloride (CuCl2), Polyvinyl Chloride (Unreformed Substrate), Polypropylene (about 10% heavier than 10% heavier), Copper Ink, Ink, Organic Solvent, Zinc

1. LBC Temp Exception RE-003 - Small Electrical Components

**Living Building Challenge Criteria:**

**H3 Red List:**  
 LBC Red List Free: 100%  
 LBC Red List Approved: 100%  
 100%  
 100%  
 100%  
 100%

XAL-0002  
 03/10/2024  
 Original Issue Date: 2023

INTERNATIONAL LIVING FUTURE INITIATIVE | <http://www.livingfuture.com>

**BASO mounting instructions**

Get access to the BASO 2.5 WW mounting instructions faster by scanning the QR code.

[www.xalusa.com/resources/mounting-instructions/baso](http://www.xalusa.com/resources/mounting-instructions/baso)

